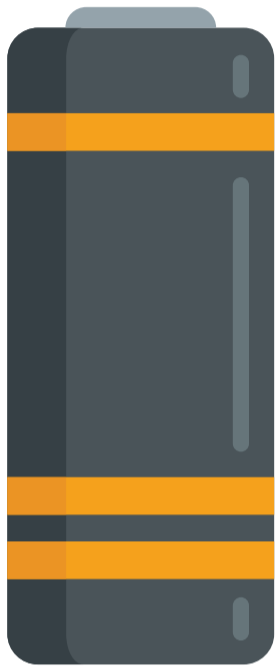


Alkaline batteries



Here you put

- Flashlight batteries
- Radio batteries
- Other small batteries



Here you don't put

- Lithium-ion batteries

Lithium-ion batteries



Here you put

- Lithium-ion batteries

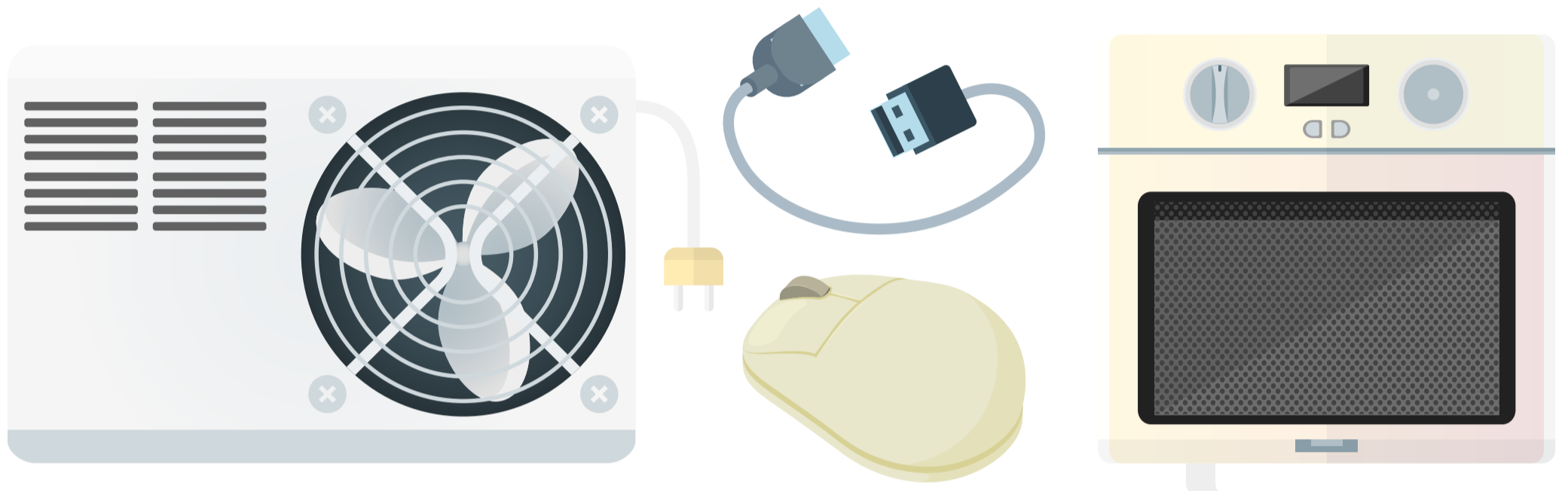


Here you don't put

- Flashlight batteries
- Radio batteries
- Other small batteries



Electrical waste



Here you put e.g.

- TV and radio equipment
- DVD players
- Printers
- Cable routing
- Computer mice



Here you don't put e.g.

- Domestic appliances
- Lamps
- Phones, computers and screens – retrieval of IT eradication is ordered via [Serviceportalen.su.se](https://serviceportalen.su.se)



Food waste



Here you put e.g.

- Leftover vegetables
- Remains of fruit
- Bread and eggshells
- Tea leaves and coffee grounds
- Uncolored napkins



Here you don't put e.g.

- Soil
- Garden waste
- Snus
- Dust
- Popsicle sticks

Coloured glass containers



Here you put e.g.

- Coloured glass bottles
- Coloured glass jars



Here you don't put e.g.

- Clear glass bottles
- Clear glass jars
- Drinking glasses
- Window glass



Clear glass containers



Here you put e.g.

- Clear glass bottles
- Clear glass jars

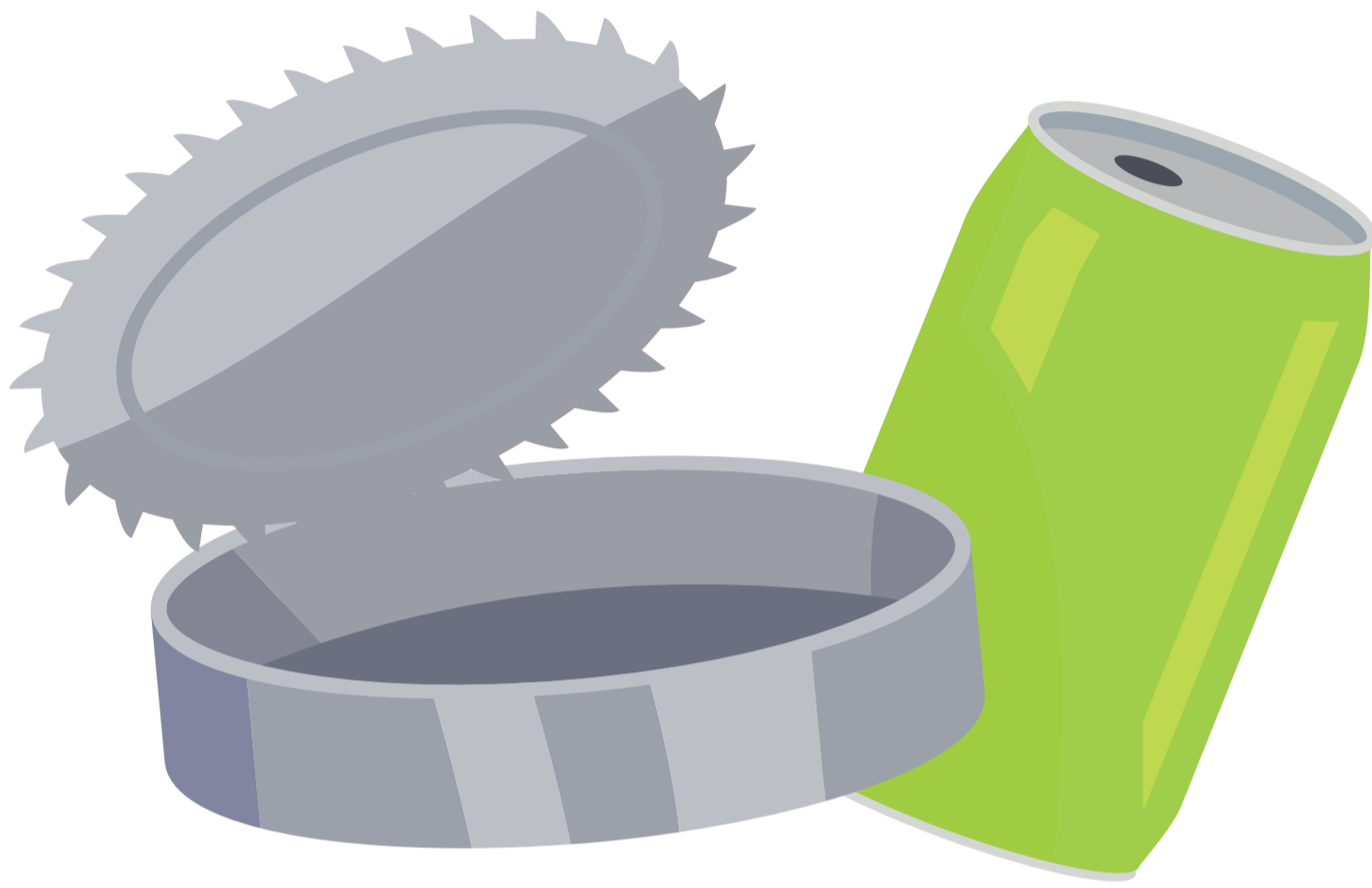


Here you don't put e.g.

- Coloured glass bottles
- Coloured glass jars
- Drinking glasses
- Window glass



Metal waste



Here you put e.g.

- Metal containers
- Aluminium trays
- Tinfoil
- Metal sheets and other metal waste



Here you don't put e.g.

- Electrical waste
- Domestic appliances
- Paint tins with leftover paint or empty aerosol sprays



Returpapper



Here you put e.g.

- Catalogues
- Course booklets
- Newspapers and magazines
- Wrapping paper
- Receipts
- Post it notes



Here you don't put e.g.

- Envelope
- Hardcover books
- Decals
- Labels



Plastic



Here you put e.g.

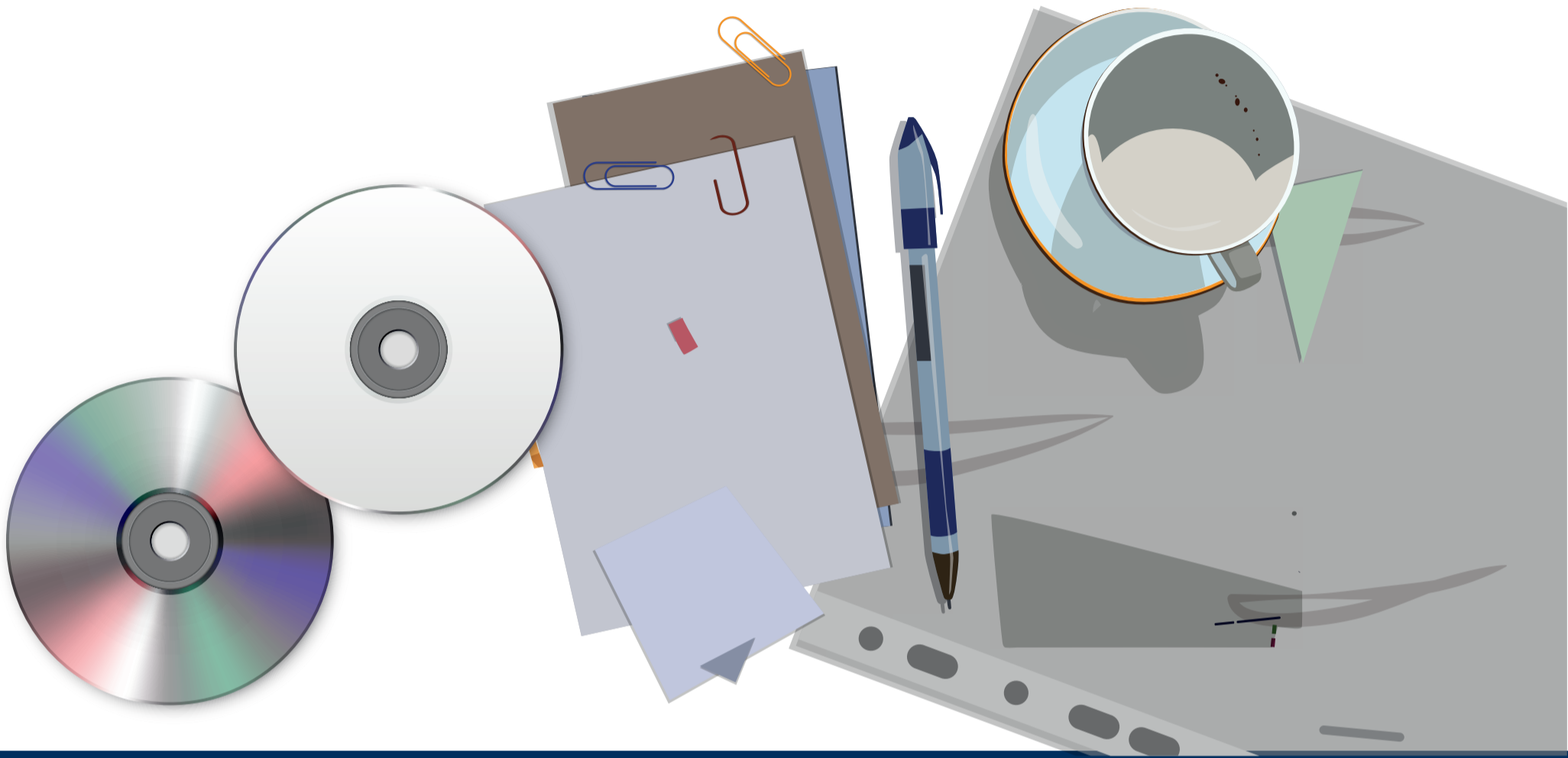
- Rigid plastic containers
- Non-rigid plastic containers
- Styrofoam
- Styrofoam shavings



Here you don't put e.g.

- Plastic cutlery
- Plastic mugs
- Plastic plates
- Washing-up brushes
- Flowerpots or straws

Sortable waste



Here you put e.g.

- Ring-binders
- Plastic wallets
- Porcelain and ceramics
- Windowpane glass
- Drinking glasses
- Plastic pipette racks

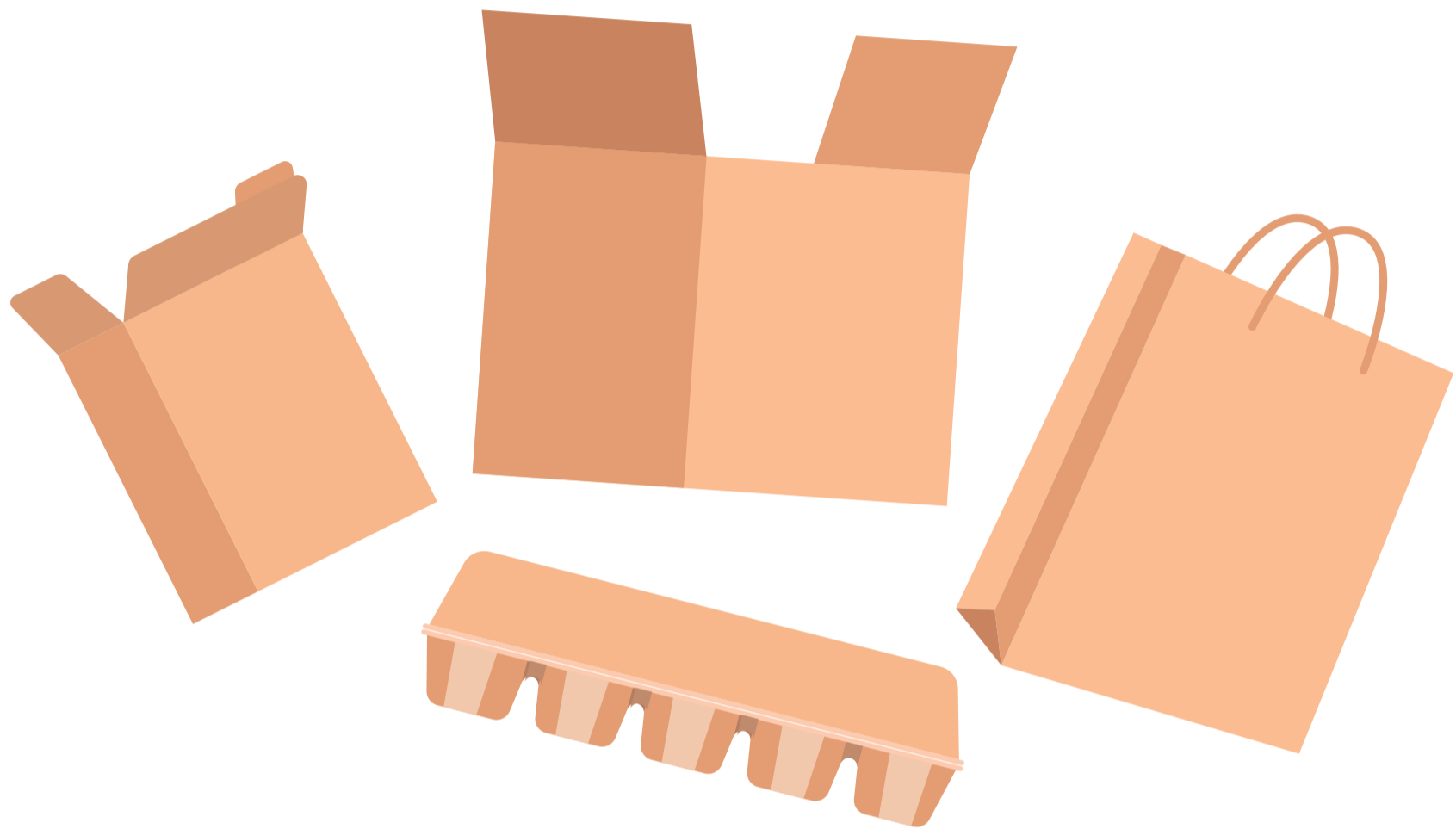


Here you don't put e.g.

- Glass
- Plastic or metal containers
- Hazardous waste
- Electrical waste
- Fluorescent tube-lights
- Household waste



Cardboard and paper packaging



Here you put e.g.

- Cardboard boxes
- Cardboard sheets
- Cardboard tubes
- Corrugated cardboard
- Paper packaging – e.g. milk packaging, paper carrier bags and cereal packages

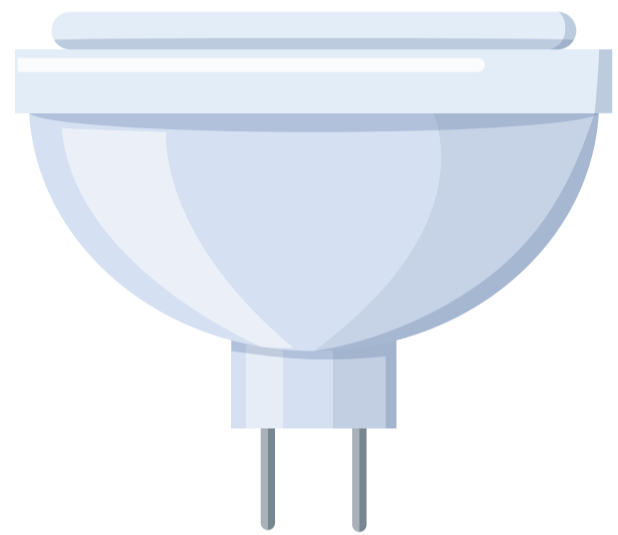
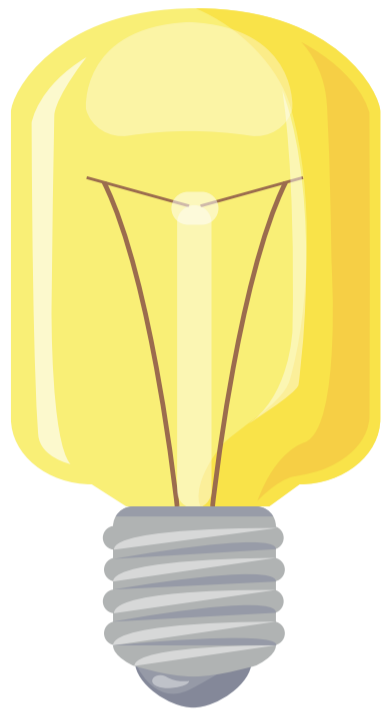


Here you don't put e.g.

- Plasticized corrugated cardboard
- Soiled corrugated cardboard
- Soiled paper
- Packaging



Light sources



Here you put e.g.

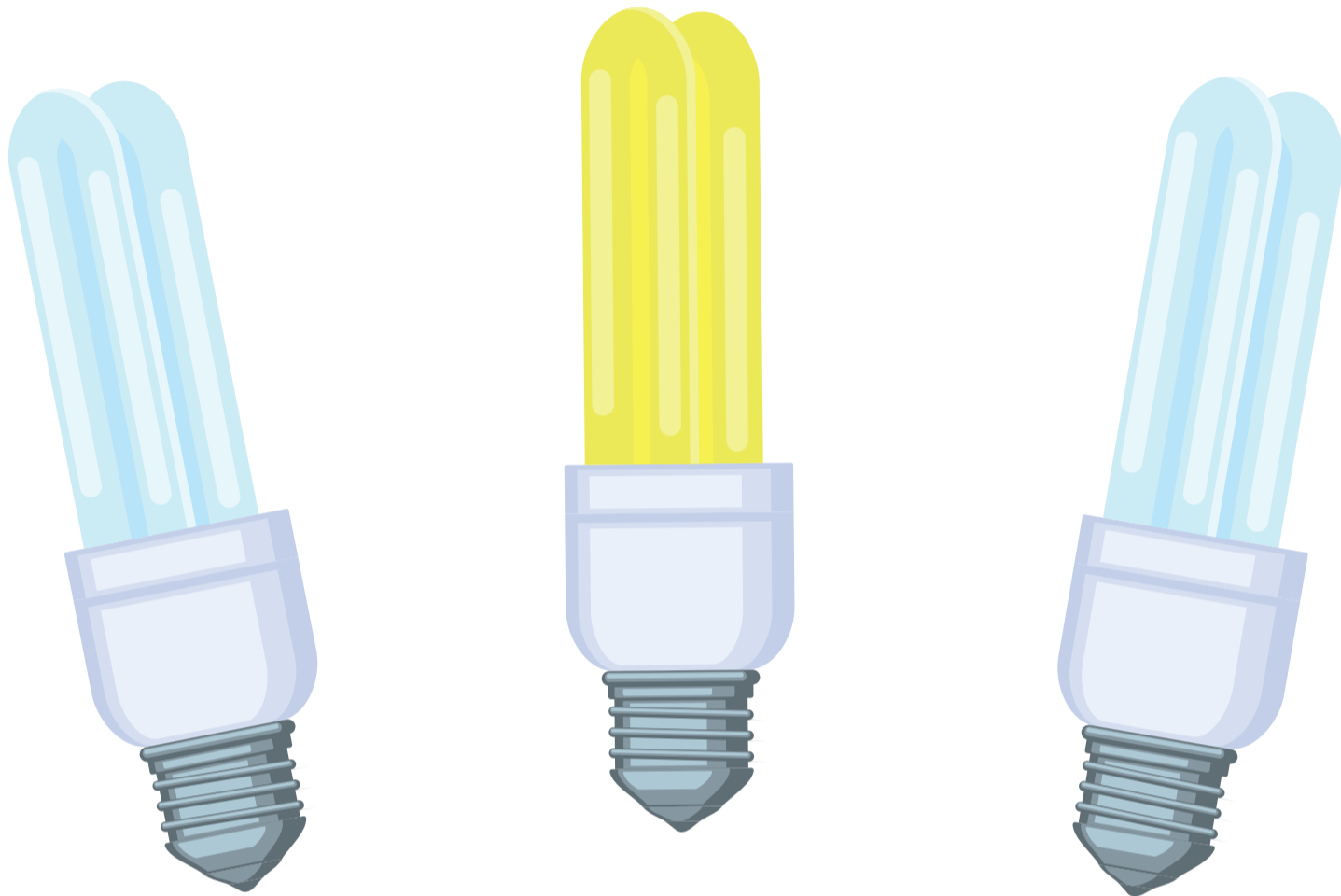
- Conventional light-bulbs
- Halogen bulbs
- LED lights
- Microscope lamp bulbs
- Chromatic lights



Here you don't put e.g.

- Low-energy light-bulbs
- Fluorescent tube-lights

Low-energy light-bulbs



Here you put

- Low-energy light-bulbs

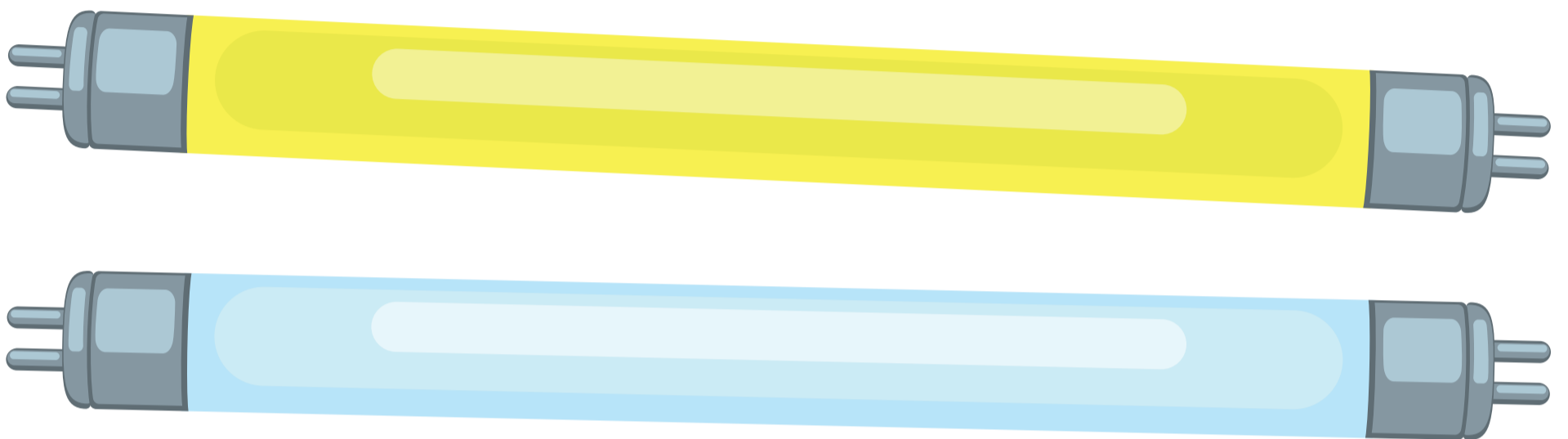


Here you don't put e.g.

- Conventional light-bulbs
- Fluorescent tubes
- Halogen bulbs
- LED lights
- Microscope lamp bulbs
- Chromatic lights



Fluorescent tubes



Here you put e.g.

- Fluorescent tubes

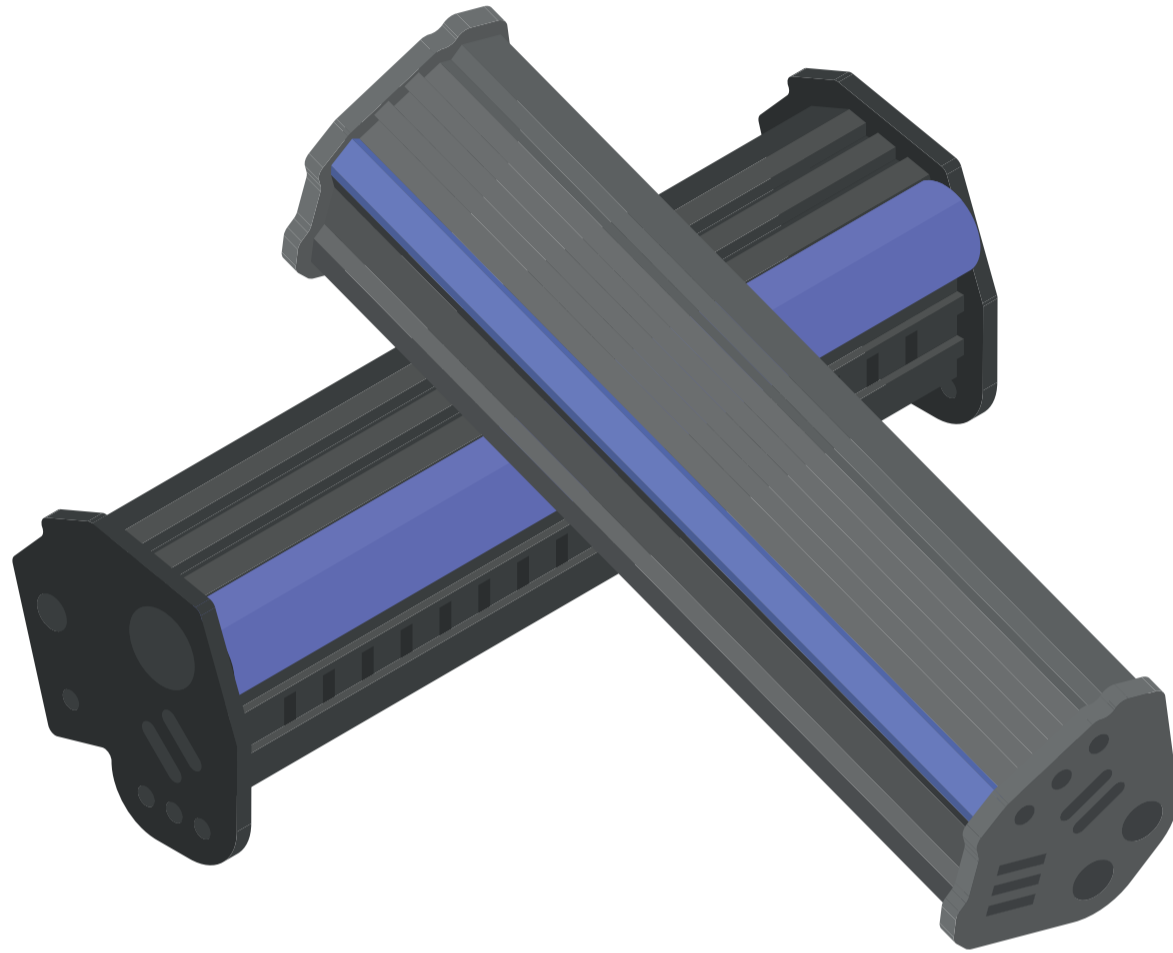


Here you don't put e.g.

- Low-energy light-bulbs
- Conventional light-bulbs
- Halogen bulbs
- LED lights
- Microscope lamp bulbs
- Chromatic lights



Toner cassettes and Ink cartridges



Here you put e.g.

- Toner cassettes
- Ink cartridges

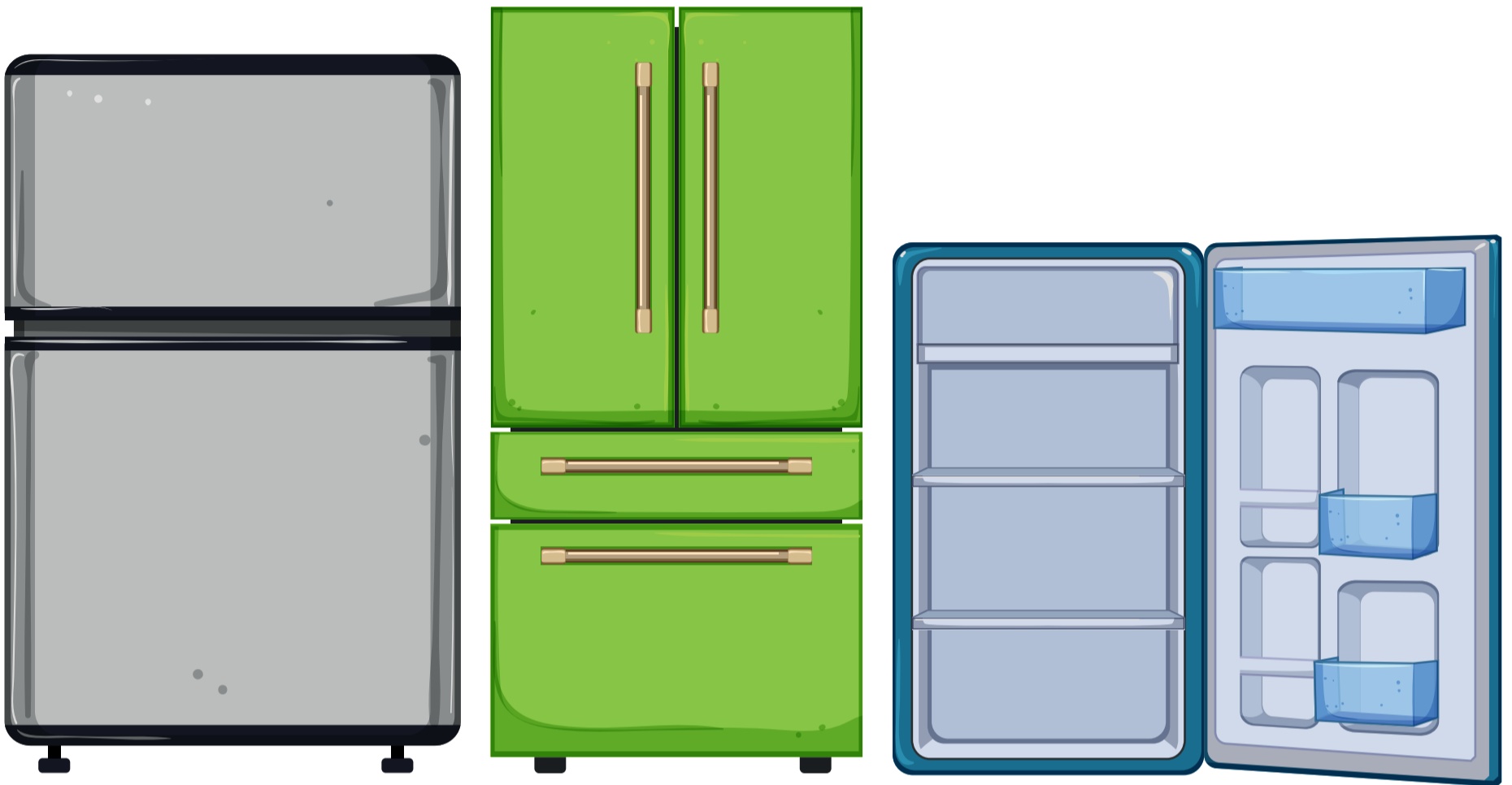


Here you don't put e.g.

- Cardboard boxes
- Plastic packaging/containers or styrofoam
- Plastic containers for carbon powder



Refrigerators and freezers



Here you put

- Refrigerators
- Freezers



Here you don't put e.g.

- Electrical waste

Residual waste



Here you put e.g.

- Contaminated paper
- Tobacco and snuff
- Envelope
- Dish cloths
- Dish brushes



Here you don't put

- Glass
- Food waste
- Hazardous waste
- Electrical waste
- Metal

Wood waste



Here you put e.g.

- Disposable pallets
- Boards
- Wooden boxes
- Varnished and painted wood
- Fiber boards



Here you don't put

- Pressure impregnated timber
- Contaminated wood
- Reusable wooden pallets

