

Reference number: SU FV-0144-24	Decided by, revision date: 2024-09-17,	Pages: 1 (5)
Decided by: Chief of Security	Type of document: Instruciton	
Responsible officer: Hanna Gustavsson, Mikael Corell	Responsible administrative department: Property Management Office	

Instructions for labelling laboratory and hazardous areas

Signs shall be posted at all doors to areas with any type of hazardous equipment or chemicals.

General signage:

- SU's sign generator is used for uniform signage: <https://doorsafety.sign.su.se/>
- The signs are posted by the doors, at eye level, so that they can be seen even if the doors are upright, i.e. usually by the side of the door.
- The signs are kept up to date by the responsible department/equals themselves and should show current hazards. It is recommended to have a simple frame where the information can be easily replaced if necessary.
- CLP flame should be posted for volume above 0.5L flammable liquid.
- Contact persons with phone numbers should be indicated for urgent matters in the premises. If no contact persons are indicated, the Head of Department will be contacted in the event that it is necessary to enter the premises to take urgent action. (For planned actions, the mailing lists provided by the departments should be used.)
- It must always be specified to what extent outsiders should be authorised to enter the premises. Think it through so that you set it at the right level.

Additional signage:

- If the room/space contains 5-50L of flammable liquid, the CLP flame must be posted on the door in size 10x10 cm. This signage is for the emergency services in emergency response and is placed on the lower half of the door, in the centre of the door. (See example below).
- If the room/space contains more than 50L of flammable liquid, it must be labelled with a large CLP flame at least 20 x 20 cm in size. This signage is for the emergency services in emergency response and is placed on the lower half of the door, in the centre of the door. (Such storage may only take place in storerooms/cabinets containing only flammable liquids).
- If the room/space contains more than 30 litres of flammable gas, a sign prohibiting fires must be posted at eye level and clearly visible. Where it is clearly visible to staff.
- All doors to rooms/spaces with pressurised vessels must always be labelled with the corresponding CLP symbol. The sign is placed in the centre of the door above any flame. Temporary signage should be used when the gas cylinders are used periodically in the space.





Note that a so-called gas cabinet that is fire protection classified is a separate fire cell. In this case, only the cabinet is signposted and not the door(s) into the laboratory. Sign size at least 20 x 20 cm.





- Rooms/spaces for pressurised vessels must always be supplemented with a list of the vessels in the fire compartment, the size of each vessel, the number and CLP symbols specifying the hazards of each gas. The text should be large enough to be easily readable even in a smoke-filled room. (Font ex Calibri, text size 48.) The list is placed above the CLP gas cylinder symbol.
- Outlets for flammable gases that form explosive atmospheres and zones where explosive atmospheres may occur must be classified and labelled with an EX sign adjacent to the outlet/zone, preferably with black and yellow tape marking to clarify the EX zone. (Valves with double membranes are not classified.)
- EX sign for rooms with EX classification (e.g. storage rooms) and with plastic pocket containing classification plan with risk area.
- Rooms/spaces with liquefied gases in liquid form must be labelled with the symbol for DANGER with additional information about the risks. Temporary hazard signage should be used when liquefied gases are used intermittently.
- "Obvious danger" is correctly signposted with additional hazard information. For example, strong magnetic fields, ionising radiation

- Signage of bins containing contaminated waste or other waste handled by laboratory staff themselves should be clear so that they cannot be mixed up by cleaning staff. Cleaning staff should only empty waste bins with contents that have not been in contact with chemicals or samples.

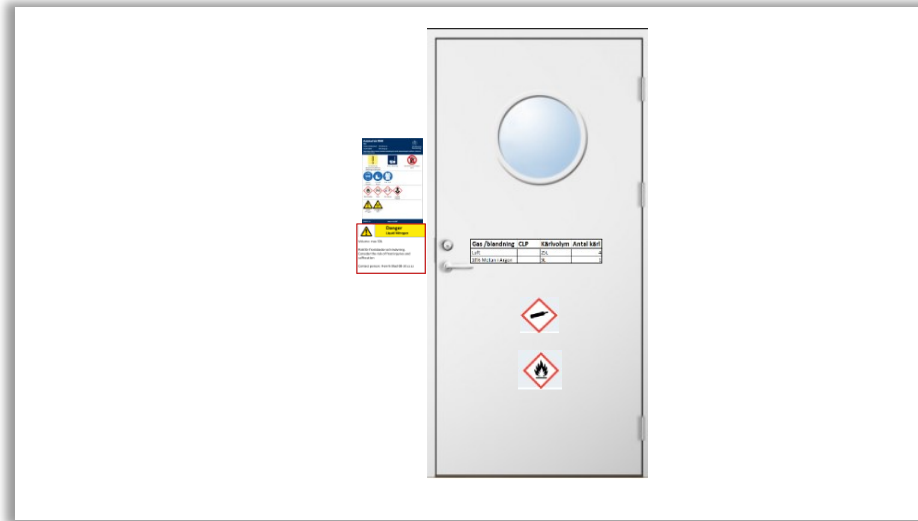
Check with the laboratory safety coordinator at Stockholm University if in doubt.

Additional signage table

Hazard	CLP	Location	Other information												
Flammable liquid 5-50L	 10x10cm	Lower half of the door, centred.													
Flammable liquid 50L>	 Min:20x20cm	Lower half of the door, centred.	Storage may only take place in storerooms/cabinets containing only flammable liquids.												
Pressurised containers /Aerosol containers	 Min:20x20cm	Centre of the door, above any flame. Use movable signage for periodic use of gas cylinders.	Note that a fire-resistant gas cabinet is a separate fire cell, where only the cabinet is labelled, not the door to the laboratory.												
Pressurised containers	<table border="1" data-bbox="571 957 840 1013"> <thead> <tr> <th>Gas /blandning</th> <th>CLP</th> <th>Kärlvolym</th> <th>Antal kärli</th> </tr> </thead> <tbody> <tr> <td>Luft</td> <td></td> <td>25L</td> <td>4</td> </tr> <tr> <td>10% Metan i Argon</td> <td></td> <td>5L</td> <td>1</td> </tr> </tbody> </table>	Gas /blandning	CLP	Kärlvolym	Antal kärli	Luft		25L	4	10% Metan i Argon		5L	1	Place the list over the CLP symbol for pressurised vessels.	Supplementary list of gas vessels, their size, number and CLP symbols for each gas. The text should be easy to read even in a smoke-filled corridor (e.g. Calibri font, text size 48).
Gas /blandning	CLP	Kärlvolym	Antal kärli												
Luft		25L	4												
10% Metan i Argon		5L	1												
Storage room for larger quantities of liquids >50L and storage room for brf gas.	 Min:20x20cm	At eye level, clearly visible.	Door always labelled with flame. Purchased classified cabinets are usually delivered pre-labelled. Otherwise label also these.												

Significant hazard		Lower half of the door, centred.	Signed when relevant to the emergency services.
EX-classified storage sites for brf gas and liquid.		At eye level, clearly visible.	Door always labelled with flame
Flammable gas outlet/zone or open handling of flammable liquid forming explosive atmosphere		Placed adjacent to the outlet post/zone.	Valves with double membranes are not classified. Add yellow-black marking tape on the floor or bench to clarify the zone.
Laboratories with liquefied gases	 +information about the hazard	At the side of the door at eye level.	Use movable signage for periodic use of liquefied gases.

Example of what it can look like.



If you are uncertain about what applies, please contact your local laboratory safety coordinator.